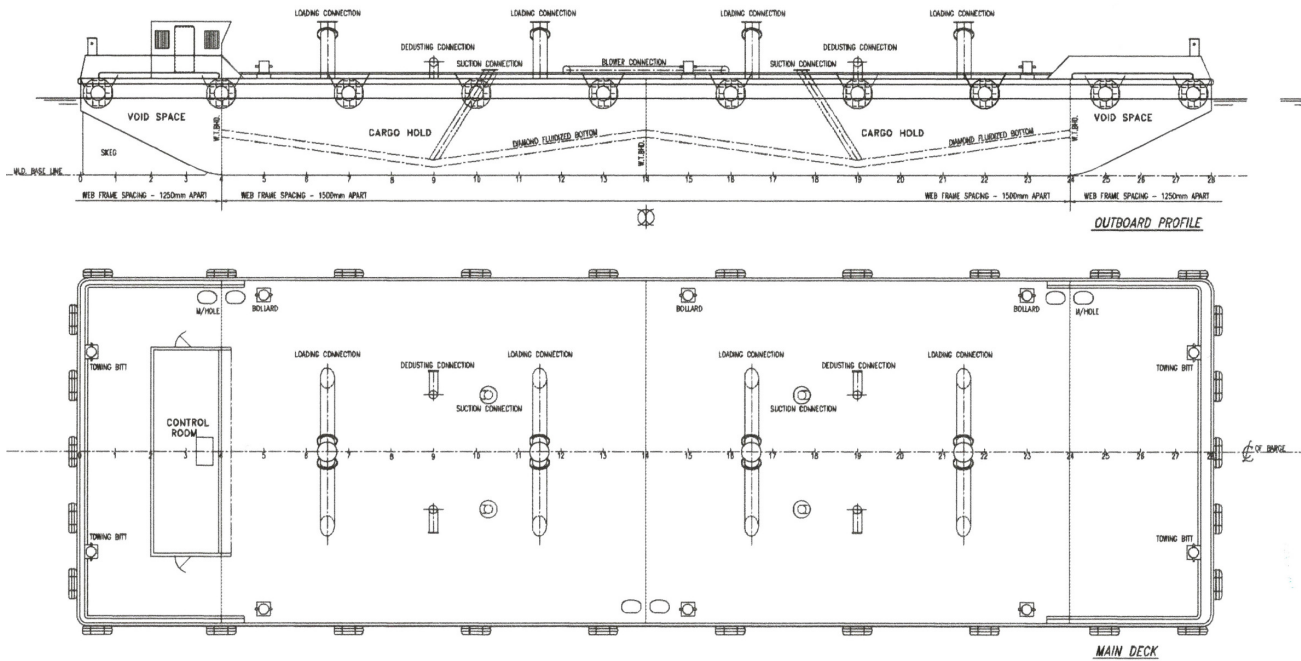


DWT 850 TON CEMENT CARRIER BARGE

Non Self propeller Barge



Main Particular;

Length Overall	40 meter
Breadth	12 meter
Depth	3.40 meter
Design Draft	2.8 meter
Complement	2 men
Class	LR

Tank Capacity;

Fresh water	2.5 m ³
Sludge & Sewage	0.8 m ³

Navigation Equip

Echo Sounder
Radar
GPS

Cargo Capacity;

Cement 850 MT

Generator;

Gen Engine Yanmar/GF 1600L/16HP @ 1600 RPM
Generators Kojima Model ST-3
3KW/ 50Hz/230V @ 1500 RPM

Deck Machinery;

Anchor Windlass 5.5 Tons

Specification to be adjusted as per Buyer request.