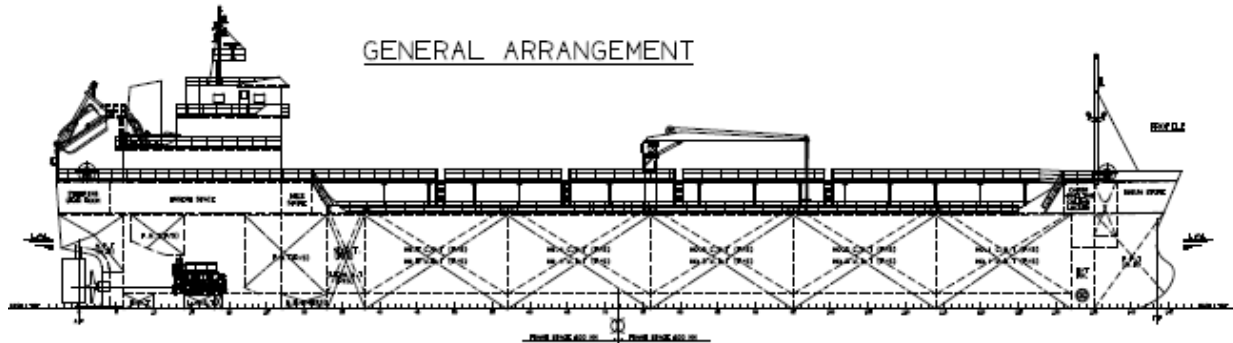


## 4999 Dwt CPP Tanker



### General & Hull

Type	CPP Tanker
Type	Double Skin, Bridge and Machinery Aft
Intended Cargo	Flash Point below 60°C Gasoline, Diesel Oil
Navigation Area	Domestic Costal
Classification	KR ( IACS )
Rule & Regulation	ICLL, MARPOL, MLC, Korea Ship Safety Act, Other Relevant Rule & Regulations

### Principal Particular

Length overall	Abt	95.00 M
L.B.P	Abt	91.00 M
Breadth ( Molded )		16.50 M
Depth ( Molded )		7.50 M
Design Draft		5.50 M
Cargo tank Capacity ( 100% )	Abt	5900 Cbm
Service Speed ( 85% M.C.R)	Abt	11.5 Knots
COMPLEMENT		20 persons

### Main Machinery

Main Engine	Akasaka Japan One (1) set, 1950kw, 280 RPM
Propulsion	Fixed Pitch Propeller
Main generator	Yanmar/Japan Two (2) sets, 320 KW at 900 RPM
CARGO PUMP	Taiko/Japan (2) Two sets, 1000 Cbm P/H Screw type Driven by ME
Fire & G/S Pump	2 x 60 Cbm P/H x 35 M

### Tank Capacity

Cargo Tank	5900m3	No of Cargo Hold 5 (p/s)
Water Ballast Tanker	1500m3	
FO Tank	220m3	
DO Tank	70m3	

### Safety & Life Saving Equipment

Life Raft	20 Persons ( 2 ) sets
Life Boat	20 Persons ( 1 ) sets
Fixed Foam & CO2 System	One (1) set

### Deck Machinery & Mooring Equipment

Steering Gear	One (1) set
Windlass	Two (2) sets
Winch	One (2) set
Deck Crane	One (1) set 0.9 ton SWL
Anchor & Chain	Completed One (1) set
Mooring Equipment	Completed One (1) set

**Specification to be adjusted as per Buyer request.**