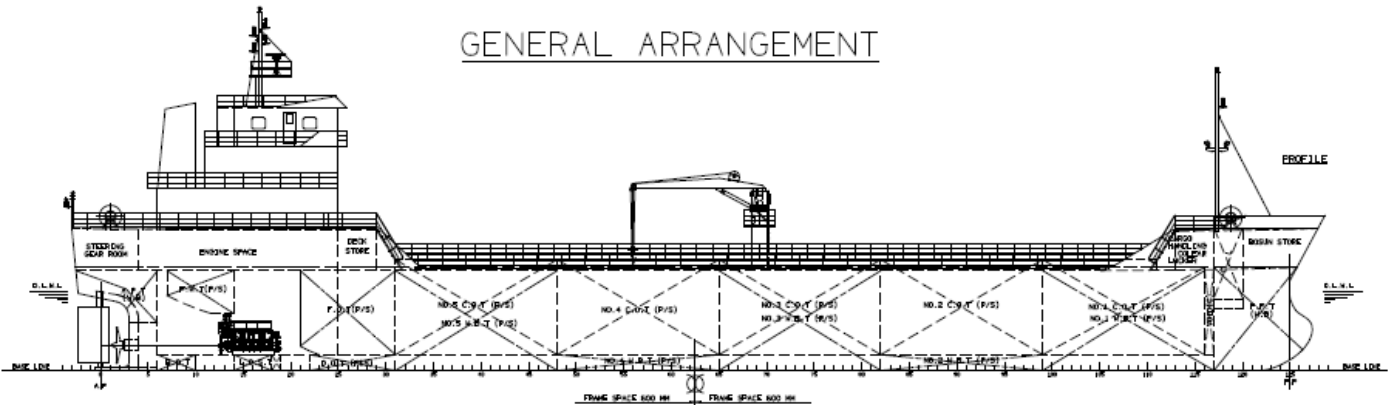


3200m3 CPP Tanker

GENERAL ARRANGEMENT



General & Hull

| | |
|-------------------|---|
| Type | CPP Tanker |
| Type | Double Skin, Bridge and Machinery Aft |
| Intended Cargo | Flash Point below 60°C Gasoline, Diesel Oil |
| Navigation Area | Domestic Costal |
| Classification | KR (IACS) |
| Rule & Regulation | ICLL, MARPOL, MLC, Korea Ship Safety Act, Other Relevant Rule & Regulations |

Principal Particular

| | | |
|------------------------------|-----|------------|
| Length overall | Abt | 78.00 M |
| L.B.P | Abt | 75.00 M |
| Breadth (Molded) | | 13.60 M |
| Depth (Molded) | | 6.30 M |
| Draft (D.L.W.L Molded) | | 5.00 M |
| Cargo tank Capacity (100%) | Abt | 3200 Cbm |
| Service Speed (85% M.C.R) | Abt | 11.5 Knots |
| COMPLEMENT | | 16 persons |

Main Machinery

| | |
|--------------------|---|
| Main Engine | Yanmar/Japan One (1) set, 1500kw, 750 RPM |
| Propulsion | Fixed Pitch Propeller |
| Main generator | Doosan Infracore Two (2) sets, 220 KW at 1800 RPM |
| CARGO PUMP | Taiko/Japan (2) Two sets, 500 Cbm P/H Screw type Driven by ME |
| Fire & G/S Pump | 60 Cbm P/H x 35 M |
| Ballast & G/S Pump | 40 Cbm P/H x 35 M |

Tank Capacity

| | | |
|----------------------|--------|--------------------------|
| Cargo Tank | 3200m3 | No of Cargo Hold 5 (p/s) |
| Water Ballast Tanker | 800m3 | |
| FO Tank | 100m3 | |
| DO Tank | 30m3 | |

Safety & Life Saving Equipment

| | |
|-------------------------|-----------------------|
| Life Raft | 20 Persons (2) sets |
| Fixed Foam & CO2 System | One (1) set |

Deck Machinery & Mooring Equipment

| | |
|-------------------|--|
| Steering Gear | One (1) set |
| Windlass | Two (2) sets 5 ton x 9 m/min (Chain), 5 ton x 12 m/min (Mooring) |
| Winch | One (1) set 5 ton x 12 m/min (Mooring) |
| Deck Crane | One (1) set 0.9 ton x 9 mtr, Jib Crane, Elec. Hyd. Type |
| Anchor & Chain | Completed One (1) set |
| Mooring Equipment | Completed One (1) set |

Specification to be adjusted as per Buyer request.