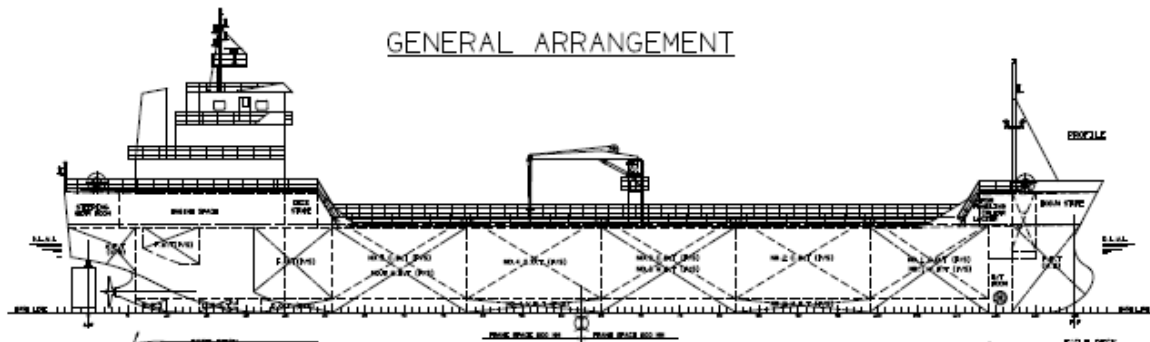


2500m3 CPP Tanker



General & Hull

Kind	CPP Tanker
Type	Double Skin, Bridge and Machinery Aft
Intended Cargo	Flash Point below 60°C Gasoline, Diesel Oil
Navigation Area	Domestic Costal
Classification	KR (IACS)
Rule & Regulation	ICLL, MARPOL, MLC, Korea Ship Safety Act, Other Relevant Rule & Regulations

Principal Particular

Length overall	Abt	75.00 M
L.B.P	Abt	70.00 M
Breadth (Molded)		12.50 M
Depth (Molded)		5.70 M
Draft (D.LW.L Molded)		4.80 M
Gross tonnage	Abt	750 tons
Cargo tank Capacity (100%)	Abt	2500 Cbm
Service Speed (85% M.C.R)	Abt	11.5 Knots

Main Machinery

Main Engine	Yanmar/Japan One (1) set, 1330kw, 750 RPM
Propulsion	Fixed Pitch Propeller
Main generator	Doosan Infracore Two (2) sets, 220 KW at 1800 RPM
CARGO PUMP	Taiko/Japan (2) Two sets, 400 Cbm P/H Screw type Driven by ME
Fire & G/S Pump	60 Cbm P/H x 35 M
Ballast & G/S Pump	40 Cbm P/H x 35 M

Tank Capacity

Cargo Tank	2500m3	No of Cargo Hold 5 (p/s)
Water Ballast Tanker	500m3	
FO Tank	70m3	
DO Tank	30m3	
FW Tank	30m3	

Safety & Life Saving Equipment

Life Raft	20 Persons (2) sets
Fixed Foam & CO2 System	One (1) set

Deck Machinery & Mooring Equipment

Steering Gear	One (1) set
Windlass	Two (2) sets b5 ton x 9 m/min (Chain), 5 ton x 12 m/min (Mooring)
Winch	One (1) set 3.5 ton x 12 m/min (Mooring)
Deck Crane	One (1) set 0.9 ton x 9 mtr, Jib Crane, Elec. Hyd. Type
Anchor & Chain	Completed One (1) set
Mooring Equipment	Completed One (1) set

Specification to be adjusted as per Buyer request.